

ISLE OF ANGLESEY COUNTY COUNCIL	
Report to:	THE EXECUTIVE
Date:	20 FEBRUARY 2024
Subject:	TREASURY MANAGEMENT STRATEGY STATEMENT 2024/25
Portfolio Holder(s):	COUNCILLOR R WILLIAMS, DEPUTY LEADER AND PORTFOLIO HOLDER FINANCE,
Head of Service / Director:	MARC JONES, DIRECTOR OF FUNCTION (RESOURCES) AND SECTION 151 OFFICER
Report Author: Tel: E-mail:	CLAIRE KLIMASZEWSKI ClaireKlimaszewski@ynysmon.llyw.cymru
Local Members:	n/a
A –Recommendation/s and reason/s	
<ul style="list-style-type: none"> • The Council is required to produce and publish an annual Treasury Management Strategy Statement (TMSS) before the start of each financial year. The Council, under the Local Government Act 2003 and Welsh Government Regulations, has to have due regard to the CIPFA Prudential Code and CIPFA Treasury Management Codes, the latest versions of which were published in 2021. • This TMSS complies with the requirements in both codes and sets out all the requirements which must be followed in how the Isle of Anglesey County Council treasury management activities are conducted. This helps to ensure that the Council's investments are secure and sufficiently accessible so that there is enough cash to for day-to-day payments as they fall due. The TMSS, as required by the codes, also provides a framework to ensure that the Council's borrowing levels remain prudent and affordable. • The CIPFA Prudential Code, 2021 (S29), introduced more frequent treasury management monitoring reports. Prior to the 2021 version of the code, a treasury management mid-year review and treasury management year-end outturn monitoring report were the minimum standards. In accordance with the revised Prudential code, the Council now produces treasury management quarterly reports culminating in the year-end treasury management outturn report. • These reports provide monitoring information on the forward-looking prudential indicators which are specified in the appendices within the TMSS. The reports highlight any significant variances from the approved indicators and include forecasts on the Council's borrowing and investments during the year. The additional reports are not required to go full Council, therefore, these are presented to the Executive for approval. The treasury management mid-year review and outturn reports will continue to be scrutinised by the Governance and Audit Committee, considered by the Executive and approved by full Council. <p>Recommendations</p> <ul style="list-style-type: none"> • To consider the Treasury Management Strategy Statement for 2024/25 and to make recommendations or note comments for consideration by full Council. 	
B – What other options did you consider and why did you reject them and/or opt for this option?	
n/a	

C – Why is this a decision for the County Council?		
.		
CH – Is this decision consistent with policy approved by the full Council?		
Yes		
D – Is this decision within the budget approved by the Council?		
N/a		
DD – Assessing the potential impact (if relevant)		
1	How does this decision impact on our long term needs as an Island	Treasury management is key to facilitating sustainability for the long-term needs of the Island as borrowing plans help to fund capital expenditure to ensure assets are available now and into the future. Treasury plans must also be affordable to ensure that future generations are not disadvantaged by Treasury Management decisions taken in the short and medium term.
2	Is this a decision which it is envisaged will prevent future costs / dependencies on the Authority? If so, how:-	The Treasury Management strategy and activity must be affordable to mitigate the impact on the future. Some capital expenditure funded by borrowing such as Sustainable Communities for Learning and other invest to save schemes funded by borrowing may help to reduce future costs.
3	Have we been working collaboratively with other organisations to come to this decision, if so, please advise whom:	Treasury Management activities often fund capital projects in partnership with other organisations, such as Welsh Government. The 21 st Century Schools Programme / Sustainable Communities for Learning new schools/extensions were / are funded with significant funding from Welsh Government.
4	Have Anglesey citizens played a part in drafting this way forward? Please explain how:-	Anglesey Citizens are consulted each year about the annual capital programme, some of which is dependent on Treasury Management activities. More in-depth consultation occurs on some capital projects such as new school builds / school reorganisations.
5	Note any potential impact that this decision would have on the groups protected under the Equality Act 2010.	Newly built assets funded by borrowing will be compliant with the Equality Act and related regulations and guidance. Annual refurbishments and replacement programmes also help to increase accessibility and enable diversity.
6	If this is a strategic decision, note any potential impact that the decision would have on those experiencing socio-economic disadvantage.	The TMSS is required each year.
7	Note any potential impact that this decision would have on opportunities for people to use the Welsh language and on treating the Welsh language no less favourably than the English language.	Some of the projects funded by borrowing have a positive impact on the development and increase of the Welsh Language, such as the Welsh medium schools built as part of the 21 st Century Schools Programme / Sustainable Communities for Learning Programme.

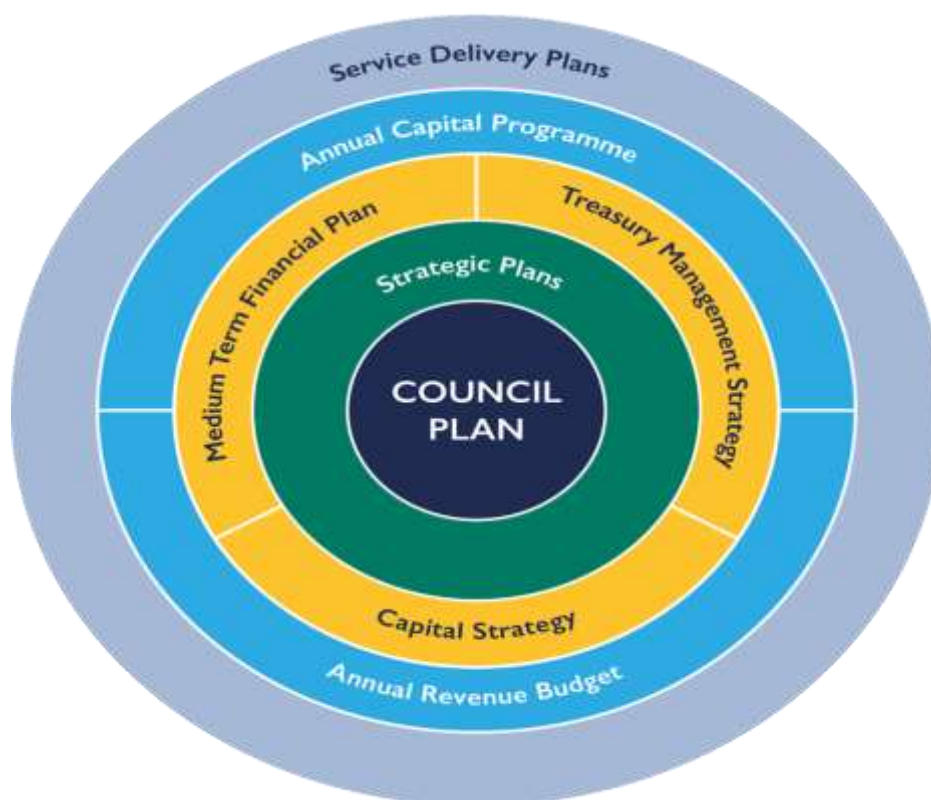
E – Who did you consult?		What did they say?
1	Chief Executive / Leadership Team (LT) (mandatory)	
2	Finance / Section 151 (mandatory)	n/a – this is the Section 151 Officer’s report.
3	Legal / Monitoring Officer (mandatory)	
4	Human Resources (HR)	
5	Property	
6	Information Communication Technology (ICT)	
7	Procurement	
8	Scrutiny	
9	Local Members	
10	Other	The Governance and Audit Committee resolved to:- <ul style="list-style-type: none"> To accept the Treasury Management Strategy Statement for 2024/25, and to recommend it to the Executive without comment.
F - Appendices:		
<ol style="list-style-type: none"> Treasury Management Key Principles Economic background Interest rate forecasts Loan maturity profile MRP Policy Statement Specified and non-specified investments Counterparty criteria Approved countries for investments Treasury management scheme of delegation and the role of the Section 151 Officer Prudential and Treasury Indicators Explanation of Prudential and Treasury Indicators Glossary of, and information on, Prudential & Treasury Management indicators 		
FF - Background papers (please contact the author of the Report for any further information):		
<ul style="list-style-type: none"> 2023/24 Treasury Management Strategy Statement, approved by the full Council on 9 March 2023; 2022/23 Treasury Management Outturn Report, approved by the full Council on 26 October 2023; 2022/23 Capital Outturn Report, presented to this Committee on 27 June 2023; 2023/24 Capital Budget Monitoring Quarter 2, presented to the Executive on 28 November 2023; 2023/24 Treasury Management Mid Year Report, presented to this Committee on 8 February 2024; 2024/28 Capital Strategy – Executive, 29 February 2024 		

TREASURY MANAGEMENT STRATEGY STATEMENT

ANNUAL INVESTMENT STRATEGY, MINIMUM REVENUE PROVISION POLICY STATEMENT AND TREASURY MANAGEMENT POLICY STATEMENT 2024/25

1. INTRODUCTION

- 1.1 The Treasury Management Strategy Statement (TMSS) 2024/25 provides the framework for day-to-day and medium-term treasury management. It is completed with regard to the CIPFA Prudential Code 2021 and the CIPFA Treasury Code 2021.
- 1.2 The TMSS is a key part of the Council's strategic planning processes to help ensure that the Council is able to achieve its strategic objectives and vision. The Council's strategic circle below shows the Council Plan is central to the work of the Council. All the Council's strategic and operational plans must align with the Council Plan to deliver the services and priorities needed to achieve the strategic objectives of the Plan. The circle shows that the Treasury Management Strategy Statement, alongside the Capital Strategy and Medium-Term Financial Plan, are the key financial strategies to ensure that the Council's financial resources are managed in line with key legislation and CIPFA requirements and are focused on meeting the priorities of the Council. This helps ensure that the Council's finances are targeted at the right functions and services to achieve the Council's goals.



2. BACKGROUND

- 2.1. CIPFA defines treasury management as:-

“The management of the local authority's borrowing, investments and cash flows, its banking, money market and capital market transactions; the effective control of the risks associated with those activities; and the pursuit of optimum performance consistent with those risks.”

- 2.2.** Treasury management involves tasks which ensure that there is enough cash in the Council general account to pay day-to-day bills and the investment of surplus cash, over what is needed in the general account. These investments must be in highly secure accounts, such as UK banks with high credit ratings. The Council prioritises security of its funds in line with the Code and ensures that enough cash is instantly accessible so that the Council is able to pay suppliers, staff and benefits, at the required payment dates. The last consideration is yield, the Council invests to get the highest interest rate possible within the pool of organisations that are secure and meet the criteria in this strategy. The final element of Treasury Management is managing the Council's loan portfolio to ensure that the Council's borrowing is not too high and that the revenue costs of borrowing are affordable.
- 2.3.** The contribution the treasury management function makes to the Council is critical, as the balance of debt and investment operations ensure liquidity or the ability to meet spending commitments as they fall due, either on day-to-day revenue or for larger capital projects. The treasury operations will see a balance of the interest costs of debt and the investment income arising from cash deposits affecting the available budget. Since cash balances generally result from reserves and balances, it is paramount to ensure adequate security of the sums invested, as a loss of principal will, in effect, result in a loss to the Council's cash reserves.

3. ISLE OF ANGLESEY TREASURY MANAGEMENT POLICY STATEMENT

- 3.1** In addition to the corporate risk policies, register, actions and monitoring, the Council takes its responsibility for good stewardship of public funds seriously and all treasury management practices will have protection of public funds engrained. It is impossible to eliminate all risk, but all treasury management activities will be managed to reduce the risk Council funds are exposed to as follows:-
- 3.1.1** Investment decisions will always prioritise security of the investment first. Liquidity is the second consideration, as the Council needs instant access to enough funds to pay day-to-day payments as they fall due. Finally, the Council will seek to maximise income earned on investments only if the investments are highly secure and if there is sufficient instant access to funds.
- 3.1.2** Bank deposits, or investments in banks or building societies, will only be placed in highly secure banks and building societies with high credit ratings in line with the criteria included in Appendix 7.
- 3.1.3** Loans to local authorities will be considered after due diligence checks have been completed.
- 3.1.4** Investments in AAA rated money market funds are permitted.
- 3.1.5** The Council will aim to keep a minimum of £10m in instant access accounts, if Council balances are sufficient.
- 3.1.6** The Council is committed to ensuring value for money in its treasury management activities, though within the context of protection of public funds.
- 3.1.7** The Council will internally borrow if there is sufficient cash balances, particularly when interest rates are rising, to reduce or delay interest payable.
- 3.1.8** If there is a borrowing need for eligible purposes, any borrowing should take into account whether rates are likely to rise or reduce in the medium-term. Short-term loans should mitigate interest payable if rates are likely to reduce in the short or medium-term, and longer-term loans should be considered if interest rates are forecast to increase in the medium to long-term.

3.1.9 Treasury management activity supports the achievement of the Council's key priorities and will be aligned with the Capital Strategy and the Medium-Term Financial Plan to ensure that investments are secure, accessible and interest receivable is optimised within secure investments. Borrowing will be based on the requirements of the Capital Strategy 2024/28 and annual programmes, but only if affordable, taking into account the financial scenario at the time and information in the Medium-Term Financial Plan which is updated regularly.

3.1.10 Setting the Treasury Management Strategy cannot be undertaken in isolation, and consideration must be given to the economic situation as this has an impact on investment interest rates, the cost of borrowing and the financial strength of counterparties.

4. EXTERNAL CONTEXT

4.1 A full summary of the economic outlook is set out in Appendix 2. Table 1 below shows the recent Bank of England base rate forecasts, inflation and PWLB rates provided by Link Group.

Table 1 – Forecast Bank Base Rate, Inflation and PWLB Rates January 2024 to September 2025

	15 Jan 2024	Mar 2024	Jun 2024	Sep 2024	Dec 2024	Mar 2025	Jun 2025	Sep 2025
Bank Rate (%)	5.25%	5.25%	5.25%	4.75%	4.25%	3.75%	3.25%	3.00%
CPI Inflation – Capital Economics	Dec - 3.7%	3.8%	2.9%	0.80%	0.70%	0.90%	0.6%	1.2%
5yr PWLB annuity rate (%)	4.63%	4.50%	4.40%	4.30%	4.20%	4.10%	4.00%	3.80%
10yr PWLB annuity rate (%)	4.86%	4.70%	4.50%	4.40%	4.30%	4.20%	4.10%	4.00%
25yr PWLB annuity rate (%)	5.43%	5.20%	5.10%	4.90%	4.80%	4.60%	4.40%	4.30%
50yr PWLB annuity rate (%)	5.24%	5.00%	4.90%	4.70%	4.60%	4.40%	4.20%	4.10%

4.2 The Bank of England's target inflation, set by the Government, is 2%. Inflation started to creep up beyond this from August 2021, with the CPI rate reaching a high of 11.1% in October 2022 due to the impact of the invasion of Ukraine, which caused significant energy and food price increases. Inflation remained high for longer than anticipated, but started to decrease in April 2023 to 8.7%, with CPI reducing to 7.9% at the end of the first quarter. Inflation rates continued to decrease in the second quarter, with CPI at 6.7% at 30 September 2023 and 4% at 31 December 2023.

4.3 At the start of the pandemic, the base rate was reduced to its lowest point at 0.1% in support of the economy. In December 2021, the Bank of England increased the rate to 0.25% and then increased the base rate at each meeting of the Monetary Policy Committee (MPC) between 0.25% to 0.75% at its highest increase. In August 2023, the MPC increased the base rate to 5.25%, in September 2023 the rate of 5.25% remained unchanged for the first MPC meeting since December 2021. The MPC also voted for no change to the 5.25% at its meetings in November and December 2023. The TMSS 2023/24 reported in March 2023 that the bank base rate was expected to peak at 4.5% in the summer and that rates would reduce slowly in 2024 and 2025. In the treasury management review for quarter 1, it was highlighted that the Bank of England base rate was forecast to peak at 5.25%. The above analysis shows that the rate of 5.25% has remained unchanged for four consecutive MPC Committees. However, there is a risk of increased inflation due to supply issues resulting from the conflict in Gaza and shipping issues in the Red Sea, which has resulted in wider conflict. There is now an increased risk that the base rate might peak at a higher rate in efforts to control inflation.

4.4 The Council benefits from a higher base rate for investment of surplus cash, which has helped the Council earn more than £1m in interest receivable. However, loans to the Council are more expensive since the Bank of England started raising interest rates to try to control inflation. External borrowing is, therefore, delayed until cash balances can no longer sustain the use of council balances to fund capital expenditure (internal borrowing).

5. THE COUNCIL'S CURRENT BORROWING POSITION

5.1 Borrowing PWLB – the Council's PWLB external borrowing remains the same as that presented in the TMSS in March 2023, except for repayment of £8k of principal on annuity loans. This is due to the need to avoid borrowing while interest rates are increasing. Instead, Council cash balances have been used to fund capital expenditure. This is in line with Link Group's advice on borrowing in the current economic climate. The opportunity cost of this is that there are less balances to invest, however, borrowing costs are higher than investment yields. To ensure the Council has enough cash to pay creditors and salaries, sufficient cash must remain in instant call accounts. Typically, the interest rates on these are much lower, so the Council is still able to make reasonable savings on interest payable while using cash balances.

5.2 Appendix 4 shows the full list of PWLB loans taken out and still payable. The oldest loan dates back to 1969, and the majority of the loans have higher interest rates than the current rates, despite the recent rise in interest rates. These are organised by the financial year the loans are due to be repaid.

Table 2 - Public Works Loans Board (PWLB)

PWLB Loans at 30 September 2023			
	PWLB / PWLB Maturity	PWLB EIP/ Annuity	Total PWLB Loans at 31 Dec 2023
Loan Outstanding (£'000)	119,400	164	119,564
Average life (years)	30.82	4.06	35.00
Average rate (%)	4.53	9.42	4.54

5.3 Borrowing Salix – Salix is a Welsh Government organisation which provides interest free loans and, more recently, grants for projects which support the environment and to help public sector bodies in Wales to work towards achieving their net zero target by 2030. The TMSS 2023 showed that, in February 2023, the Council had £3.099m of interest free loans outstanding with Salix. Since this time, the Council has received more of the borrowing approved by Salix due to more progress with the projects funded by loans from Salix.

The Council held £4.035m of Salix loans at 30 September 2023. These loans are repaid over a period of 8 or 10 years, depending on the agreement, with 2 repayments made per year, per loan. These loans have funded LED street lighting, LED lighting in schools and leisure centres and various other sustainable projects.

Table 3 - Salix Loans at 30 September 2023

Other Loans at 30 September 2023							
	Salix Loan 1 £'000	Salix Loan 2 £'000	Salix Loan 3 £'000	Salix Loan 4 £'000	Salix Loan 5 £'000	Salix Loan 6 £'000	TOTAL £'000
Outstanding Balance	16.5	114.0	349.8	158.4	1,873.7	1,522.9	4,035.3
Repayment Date	2024/25	2025/26	2027/28	2029/30	2031/32	2035/36	
Interest rate (%)	-	-	-	-	-	-	-

6. THE COUNCIL'S INVESTMENT BALANCES AS AT 31 DECEMBER 2023

6.1 The total balance of investments at 31 December 2023 was £33.227m, as shown in Table 4 below. The yield from these investments from 1 April 2023 to 31 December 2023 was £1.603m with the total interest receivable on the below listed investments expected to be £1.909m for 2023/24. This figure is likely to be higher as new investments are made when these mature, however, cash balances are reducing as the financial year progresses, so not all these investments will be viable to renew on maturity.

Table 4 – Investments 1 April 2023 to 31 December 2023

Counterparty	Start Date	End Date	Interest Rate	Investment Amounts 1 April to 31 December 2023	Investment Principal at 31 December 2023	Estimated Interest earned for the period	Estimated Total Interest 2023/24 on these investments
			%			£	£
NatWest Call Account - average for period	01/04/2023	31/03/2024	1.46%	10,365,106	7,536,347	109,414	145,942
Lloyds Call Account	18/04/2023	31/03/2024	5.14%	7,500,000	5,691,167	252,417	325,349
National Westminster Bank Fixed Term	11/01/2023	11/07/2023	4.10%	10,000,000	-	113,452	113,452
National Westminster Bank Fixed Term	11/07/2023	11/01/2024	5.88%	10,000,000	10,000,000	278,696	296,416
Santander	10/02/2023	10/05/2023	4.00%	7,500,000	-	32,055	32,055
Santander	10/05/2023	10/11/2023	4.76%	7,500,000	-	179,967	179,967
Nationwide Building Society	06/04/2023	06/07/2023	4.17%	5,000,000	-	51,982	51,982
Nationwide Building Society	06/07/2023	08/01/2024	5.47%	5,000,000	5,000,000	133,378	139,373
Goldman Sachs	22/12/2022	22/06/2023	3.83%	7,500,000	-	64,533	64,533
Goldman Sachs	22/06/2023	22/12/2023	5.52%	7,500,000	-	207,567	207,567
Wakefield Council	22/08/2023	22/09/2023	5.23%	5,000,000	-	22,210	22,210
Wrexham County Borough Council	25/10/2022	25/04/2023	3.80%	5,000,000	-	12,493	12,493
Wrexham County Borough Council	25/04/2023	25/10/2023	4.30%	5,000,000	-	107,795	107,795
National Westminster Bank Fixed Term	11/01/2024	10/03/2024	5.25%	10,000,000	-	-	84,863
Santander	10/11/2023	09/02/2024	5.34%	5,000,000	5,000,000	37,307	66,567
Nationwide Building Society	08/01/2024	08/04/2024	5.11%	0	-	-	58,100
					33,227,514	1,603,266	1,908,663

7. IMPACT OF FUTURE PLANS ON BORROWING

7.1 Capital expenditure is partly funded from borrowing, therefore, the Capital Strategy and this strategy are closely linked. The capital expenditure summary 2024/25 to 2027/28 presents three options for capital expenditure. All three scenarios take into account the work needed on the Council's assets or whether replacement assets will be needed. The three options are presented as the minimum, possible and maximum scenarios, with the maximum requirement being the amounts to bring all the Council assets to a high standard or new asset where replacements are needed. The capital expenditure in this strategy uses the first scenario – minimum, due to the significant funding shortfall for 2024/25 and, potentially, for the years beyond.

- 7.2 Table 5 below shows estimated expenditure and funding for the period 2023 to 2028. For 2025/26 onwards, this is the minimum level of capital investment due to significant funding issues. This is based on the assumption that there will be no unsupported borrowing as this may not be affordable given the revenue budget pressures faced by the Council. Only the Council's supported borrowing allocation is included in the funding section of Table 5.

Table 5 – Estimated Capital Expenditure and Funding 2023/24 to 2027/28

	2023/24 £'000	2024/25 £'000	2025/26 £'000	2026/27 £'000	2027/28 £'000
Council Fund - excl. Investment Properties	34,380	15,565	5,028	4,876	4,836
HRA	13,362	35,145	29,974	20,831	21,455
Investment Properties	2,780	0	0	0	0
Total Expenditure	50,522	50,710	35,002	25,707	26,291
Capital Grants	28,669	15,978	6,205	6,244	6,284
Capital Receipts	157	25	151	0	0
Reserves & Revenue Contributions	14,089	12,025	10,936	7,454	7,298
Balance Funded from Borrowing	7,607	22,682	17,710	12,009	12,709
Total funding	50,522	50,710	35,002	25,707	26,291

- 7.3 An important factor to consider is the impact of borrowing on the Council's Capital Financing Requirement (CFR). The CFR is the measure of the Council's underlying borrowing need. Borrowing is not limited to external borrowing from PWLB but also the use of the Council's own cash balances (internal borrowing) which have been used to fund capital expenditure. While internal borrowing saves the Council in interest payable costs, the minimum revenue provision (MRP) is charged on the basis of the underlying borrowing need (the CFR), not the actual borrowing.
- 7.4 Capital expenditure will increase the CFR but only by the sum that is not funded from grants, capital receipts, reserves or revenue. The CFR will also reduce annually by the sum of the Minimum Revenue Provision (MRP) which is charged to revenue. The level of the CFR is an important measure to ensure that the Council does not commit itself to unaffordable levels of borrowing.
- 7.5 In order to ensure that the Council has sufficient funds available to repay debt as it falls due, the Council is required to make a charge to the revenue account each year, and this charge is known as the Minimum Revenue Provision (MRP). Regulations require that the Council approves a MRP statement in advance of each financial year. The policy for 2024/25 is set out in Appendix 5. The Council's MRP policy was substantially revised in 2018, and again for the financial year beginning 1 April 2022. By making the MRP charge each year, the Council's cash balances are replenished and that, in turn, reduces the level of internal borrowing.
- 7.6 In 2018, the Council revised its MRP policy and adopted the Equal Instalment Asset Life method to calculate its MRP charge for both its supported borrowing and unsupported borrowing. The revised policy from 1 April 2022 adopts an annuity method, following a similar method to a standard repayment mortgage, where the combined repayment sum of principal repayment and interest remains constant and, as a result, the amount of principal repaid in the early years is low and increases over time. Therefore, under the annuity method the MRP charge is low in the initial years and increases over time.

7.7 The Council may choose to pay more MRP in any given year. These overpayments of MRP (which, in the Council's case, are to ensure enough cash for loan repayments) can, if needed, be reclaimed in later years. Up until 31 March 2022, the total overpayments were £268k, and related specifically to the Salix loans where the MRP charged to the revenue account has been calculated on the basis of the life of the loan rather than on the life of the asset which was funded by the loan. This ensures that the Council has sufficient cash to repay the loans when they become due for repayment.

7.8 The impact of the Council's capital expenditure plans and the MRP charge on the CFR and level of external and internal borrowing is shown in Table 6 below:-

Table 6
Capital Financing Requirement and Borrowing 2023/24 to 2027/28

	2023/24	2024/25	2025/26	2026/27	2027/28
	£'000	£'000	£'000	£'000	£'000
	Estimate	Proposed	Proposed	Proposed	Proposed
CAPITAL FINANCING REQUIREMENT (CFR)					
Opening Balance of CFR	144,112	150,588	171,991	188,238	198,521
Capital Expenditure	50,522	50,710	35,002	25,707	26,291
External Capital Grants	(28,669)	(15,978)	(6,205)	(6,244)	(6,284)
Capital Receipts	(157)	(25)	(151)	0	0
Revenue Contribution & Reserves	(14,089)	(12,205)	(10,936)	(7,454)	(7,298)
Minimum Revenue Provision	(1,131)	(1,279)	(1,463)	(1,726)	(1,933)
CLOSING BALANCE OF CFR	150,588	171,991	188,238	198,521	209,297
EXTERNAL BORROWING					
Opening Balance of External Borrowing	123,799	121,557	158,593	175,644	185,696
Borrowing to Fund Capital Expenditure	0	22,682	17,710	12,009	12,709
Borrowing to Fund Loan Repayments	0	0	0	0	0
Borrowing to Replace Internal Borrowing	0	15,000	0	0	0
Loan Repayments	(2,242)	(646)	(639)	(1,977)	(2,763)
Closing Balance of External Borrowing	121,557	158,593	175,664	185,696	195,642
INTERNAL BORROWING					
Opening Balance of Internal Borrowing	20,342	29,060	13,427	12,603	12,854
Replacement of Internal Borrowing	0	(15,000)	0	0	0
Funding Loan Repayments from External Borrowing	0	0	0	0	0
External Loan Repayments	2,242	646	639	1,977	2,763
Borrowing to Fund Capital Expenditure	7,607	0	0	0	0
Minimum Revenue Provision	(1,131)	(1,279)	(1,463)	(1,726)	(1,933)
Closing Balance of Internal Borrowing	29,060	13,427	12,603	12,854	13,684
TOTAL BORROWING	150,617	172,020	188,267	198,550	209,326

8. BORROWING STRATEGY

8.1 The Council is currently maintaining an under-borrowed position. This means that the capital borrowing need (the Capital Financing Requirement) has not been fully funded with loan debt, as cash supporting the Council's reserves, balances and cash flow has been used as a temporary measure. This strategy is prudent, as medium and longer dated borrowing rates are expected to fall from their current levels once prevailing inflation concerns are addressed by tighter near-term monetary policy.

Against this background, and the risks within the economic forecast, caution will be adopted with the 2024/25 treasury operations. The Section 151 Officer will monitor interest rates in financial markets, and adopt a pragmatic approach to changing circumstances:-

- if it was felt that there was a significant risk of a sharp FALL in borrowing rates, then borrowing will be postponed.
- if it was felt that there was a significant risk of a much sharper RISE in borrowing rates than that currently forecast, fixed rate funding will be drawn whilst interest rates are lower than they are projected to be in the next few years.
- Link Group's long-term (beyond 10 years) forecast is 3%. All PWLB certainty rates are currently significantly above this rate. Therefore, better value can be gained from short-term investments until the bank rates reduce.

8.2 External v Internal Borrowing

8.2.1 Current conditions indicate a need for a flexible approach to the choice between internal and external borrowing. However, it remains the case that there are certain limitations to externalise borrowing, careful on-going consideration needs to be given to the difference between borrowing rates and investment rates to ensure the Council obtains value for money once an appropriate level of risk management has been attained to ensure the security of its investments.

8.2.2 In favour of internalisation, over the medium term, investment rates are expected to continue to be below long-term borrowing rates. This means that value for money considerations would indicate that value could best be obtained by avoiding new external borrowing and by using internal cash balances to finance new capital expenditure, or to replace maturing external debt (this is referred to as internal borrowing). This would maximise short term savings.

8.2.3 However, short term savings by avoiding new long term external borrowing in 2024/25 must also be weighed against the potential for incurring additional long term extra costs, by delaying unavoidable new external borrowing, as PWLB long term rates are now higher. Additionally, the cash flow implications of internalising borrowing require regular review and will limit the potential extent of internalising borrowing.

8.3 Borrowing in Advance of Need

8.3.1 The Council will not borrow more than, or in advance of, its needs, purely in order to profit from the investment of the extra sums borrowed. Any decision to borrow in advance will be within forward approved Capital Financing Requirement estimates, and will be considered carefully to ensure that value for money can be demonstrated and that the Council can ensure the security of such funds.

8.4 Debt Rescheduling

8.4.1 Rescheduling of current borrowing in our debt portfolio may be considered whilst premature redemption rates remain elevated, but only if there is surplus cash available to facilitate any repayment, or rebalancing of the portfolio to provide more certainty is considered appropriate.

8.4.2 All rescheduling will be reported to the Governance & Audit Committee at the earliest practicable meeting following its action.

8.5 Borrowing from other Financial Institutions

The PWLB is the Council's main source of borrowing, with some loans from the Welsh Government owned organisation, Salix, for funding of energy efficiency and low carbon projects. The PWLB certainty rate is gilts & 80 basis points (0.8%). Consideration may be given to borrowing from the below:-

- Local authorities;
- UK Municipal Bond Agency – pooled loans;
- Money Market Funds.

9. DEBT PROFILE

9.1 Appendix 4 shows the maturity information of the Council's borrowing, the existing borrowing is due to be repaid in various years up to 2068/69. This also includes the present value of the loan payments to reflect the true impact of the loan amounts in the future, by discounting the loan principals by 3.5%, the recommended long-term rate to measure the value of money over time. The Council will aim to ensure that the repayment date is arranged so as to smooth out repayments as far as possible, but priority will be given to the interest rate payable when determining the type of loan (maturity or annuity) and the length of the loan.

Table 7 – Maturity Profile of PWLB Loans, January 2024

Number of Years until Loan Matures	Principal £'m	Present Value of Principal £'m	Cumulative %
<1	1.87	1	1.6
1 to 3	1.44	1	2.8
4 to 6	4.04	3	6.1
7 to 10	3.38	3	9.0
11 to 14	2.42	2	11.0
15 to 22	23.22	12	30.4
23 to 33	41.74	15	65.3
34 to 50	41.48	10	100.0
TOTAL	119.58	47	

10. INVESTMENT STRATEGY AND CREDITWORTHINESS POLICY

10.1 Investments will be made with reference to the core balance and cash flow requirements and the outlook for short-term interest rates (i.e., rates for investments up to 12 months). Greater returns are usually obtainable by investing for longer periods. The current forecasts predict that the base rate will remain at 5.25% but will start to reduce from September 2024. Therefore, an agile investment strategy would be appropriate to optimise returns. Accordingly, while most cash balances are required in order to manage the ups and downs of cash flow, where cash sums can be identified that could be invested for longer periods, the value to be obtained from longer-term investments will be carefully assessed.

10.2 Management of Risk

The Isle of Anglesey County Council is one of the smallest local authorities in Wales. It receives the second lowest settlement from Welsh Government, with Merthyr Tydfil receiving the lowest. The Council does not have the large council balances some of the larger authorities hold, though there are larger councils with similar balances or less. Management of risk is the primary consideration for all of the Council's investments.

- 10.2.1** The Council's investment priorities will be security first, portfolio liquidity second and then yield (return). The Council will aim to achieve the optimum return (yield) on its investments commensurate with proper levels of security and liquidity, with the Council's risk appetite being for low-risk investments only.
- 10.2.2** Minimum acceptable **credit criteria** (Appendix 7) are applied to generate a list of highly creditworthy counterparties. This also enables diversification and thus avoidance of concentration risk. The key ratings used to monitor counterparties are the short term and long-term ratings.
- 10.2.3 Other information:** ratings will not be the sole determinant of the quality of an institution; it is important to continually assess and monitor the financial sector on both a micro and macro basis and in relation to the economic and political environments in which institutions operate.
- 10.2.4** Investments can be specified or non-specified (Appendix 7 defines these and provides further information. The Council in line with its requirement for investing in low risk investments, will only invest in specified investments.
- **Specified investments** are those with a high level of credit quality and subject to a maturity limit of one year or have less than a year left to run to maturity, if originally they were classified as being non-specified investments solely due to the maturity period exceeding one year.
 - **Non-specified investments** are those with less high credit quality, may be for periods in excess of one year and / or are more complex instruments which require greater consideration by Members and officers before being authorised for use.
- 10.2.5** Lending limits (amounts and maturity) for each counterparty will be set through applying the matrix table as set out in the Creditworthiness section of this strategy.
- 10.2.6** This Council will set a limit for the amount of its investments which are invested for longer than 365 days (see Appendix 10).
- 10.2.7** The Council will only invest in counterparties outside the UK if the credit ratings are AAA or above and if there are exceptional circumstances, such as the creditworthiness of UK investments are compromised. Investments will only be placed with counterparties from countries with a specified minimum **sovereign rating** (see Appendix 9).
- 10.2.8** This Council has engaged **external consultants** to provide expert advice on how to optimise an appropriate balance of security, liquidity and yield, given the risk appetite of this Council in the context of the expected level of cash balances and need for liquidity throughout the year.
- 10.2.9** All investments will be denominated in **sterling**.

10.3 Creditworthiness Policy

10.3.1 The primary principle governing the Council's investment criteria is the security of its investments. After this main principle, the Council will ensure that:-

- It has sufficient liquidity in its investments. For this purpose, it will set out procedures for determining the maximum periods for which funds may prudently be committed. These procedures also apply to the Council's prudential indicators covering the maximum principal sums invested.
- It will only invest in counterparties which have credit ratings as outlined in Appendix 7.

10.3.2 As an additional layer to the minimum credit rating criteria described above, this Council also employs the creditworthiness service provided by Link Group.

10.3.3 The Link creditworthiness service uses a wider array of information than just primary ratings and, by using a risk weighted scoring system, does not give undue preponderance to just one agency's ratings.

- All credit ratings will be monitored daily. The Council is alerted to changes to ratings of all three agencies through its use of the Link creditworthiness service. If a downgrade results in the counterparty / investment scheme no longer meeting the Council's minimum criteria, its further use as a new investment will be withdrawn immediately.

10.3.4 Significant levels of downgrades to short and long-term credit ratings have not materialised since the crisis in March 2020. In the main, where they did change, any alterations were limited to Outlooks. Accordingly, when setting minimum sovereign debt ratings, the Council will not set a minimum rating for the UK.

10.4 Country Limits

The Council has determined that, with the exception of the UK, it will only use approved counterparties from countries with a minimum sovereign credit rating of AAA from Fitch Ratings (or equivalent from other agencies if Fitch does not provide). The list of countries that qualify using this credit criteria, as at the date of this report, are shown in Appendix 8. This list will be added to or deducted from by officers should ratings change in accordance with this policy. In practice, investments tend to be placed in UK banks for security reasons. The list is included for the unlikely event of there being an exceptional need to invest in highly secure counter-parties in other countries. For example, in the event of UK banks losing their creditworthiness and failing the specific Counterparties Council's criteria.

11. GOVERNANCE AND CONTROL

11.1 The Prudential Code reflects a move towards self-regulation for local authorities, and effective corporate governance is one of the key elements to the successful implementation of the Code.

11.2 Corporate Governance includes the following elements:-

- A formal role for the Section 151 Officer;
- Setting and monitoring of Prudential and Treasury Indicators;
- A scheme of delegation and a process of formal approval;
- Reporting on Treasury Management matters to Members.

11.3 Role of the Section 151 Officer and Members

- 11.3.1** The Section 151 Officer is responsible for ensuring that matters relating to Treasury Management and Capital Financing are taken into account and reported to the Executive / full Council for consideration, and that procedures are established to monitor performance.
- 11.3.2** The Section 151 Officer must ensure that prudential indicators are set and monitored in order to demonstrate the legislative requirement that the Council's financial plans are affordable.
- 11.3.3** Members also play an important role in not just authorising the relevant decisions but also in scrutinising treasury management processes, decisions and performance. In order to undertake this role, the CIPFA Treasury Management Code requires the responsible officer to ensure that Members with responsibility for treasury management receive adequate training in treasury management. This especially applies to Members responsible for scrutiny. In order to support the scrutiny role of the members of the Governance & Audit Committee, the Committee's members received training in treasury management, delivered by the appointed treasury management consultants on 14 September 2022. Further training will be arranged when required. The training needs of treasury management officers are regularly reviewed and addressed.
- 11.3.4** The Council officers involved in treasury management activities have comprehensive knowledge and skills for managing the treasury management function. The Section 151 Officer plays a key role in Treasury Management and approves or rejects any investments proposed by the team. The Council also provides training to increase the knowledge and skills for those responsible for management, delivery, governance and decision making.
- 11.3.5** A formal record of the training received by officers central to the Treasury function will be maintained by the Resources Performance Team. Similarly, a formal record of the treasury management / capital finance training received by Members will also be maintained by the Head of Democratic Services.
- 11.3.6** The Treasury Management Scheme of Delegation and a fuller explanation of the role of the Section 151 Officer is set out in Appendix 9.

12. TREASURY MANAGEMENT ADVICE

- 12.1** The Council uses Link Group, Link Treasury Services Limited as its external treasury management advisors. In accordance with procurement regulations, the Council retendered this service during early 2021, for the period 1 April 2021 to 31 March 2024, with an option to extend for two years, with Link Group, Treasury Solutions being the successful tender.
- 12.2** The Council recognises that responsibility for treasury management decisions remains with the organisation at all times and will ensure that undue reliance is not placed upon our external service providers. All decisions will be undertaken with regards to all available information, including, but not solely, our treasury advisers. Final responsibility for treasury management decisions remains with the Council.

13. PRUDENTIAL AND TREASURY INDICATORS

- 13.1** The Prudential and Treasury Indicators set out in Appendix 10 cover affordability, prudence and sets out limits for capital expenditure, external debt, the liability benchmark and the maturity structure of borrowing. It is for the Council to set the Prudential Indicators and it is important to not just consider the indicators for each individual year in isolation, but also to consider the past performance and the future forecasts. A fuller explanation of the purpose of each indicator is set out in Appendix 10.

14. REPORTING

14.1 The Council is required to receive and approve, as a minimum, five main reports each year, which incorporate a variety of polices, estimates and actuals.

- Prudential and Treasury Management Indicators and Treasury Strategy - the first and most important report (this report) is forward looking and covers:-
- the Treasury Management Strategy (how the investments and borrowings are to be organised), including treasury management indicators;
- an Investment Strategy (the parameters on how investments are to be managed);
- a Minimum Revenue Provision (MRP) Policy (how residual capital expenditure is charged to revenue over time);
- a Treasury Management Policy Statement (definition of the policies and objectives of the treasury management function); and
- the capital plans (including the associated prudential indicators).

14.2 Quarterly treasury management monitoring reports - these will update Members with the progress of the capital position, amending prudential indicators as necessary and whether the treasury strategy is meeting its objectives or whether any policies require revision.

14.3 An annual treasury year-end report - this is a backward-looking review document and provides details of a selection of actual prudential and treasury indicators and actual treasury operations compared to the estimates within the strategy.

14.4 The above reports are required to be adequately scrutinised before being recommended to the Council. This role is undertaken by the Governance & Audit Committee for the mid-year and year-end reports. The Executive will scrutinise the quarter 1 and quarter 3 reports which were introduced by the Prudential Code 2021.

15. CONCLUSION

15.1 In summary, the Treasury Management Strategy Statement for 2024/25 continues the strategy of prudent approach to borrowing, in order to limit the revenue implications, and using internal borrowing where cash balances allow. The investment strategy continues the policy of ensuring the security and liquidity of deposits over yield.

15.2 It is envisaged that, over the lifetime of the strategy, that the continued use of reserves to contribute to fund the revenue budget and the use of the Housing Revenue Account to fund capital expenditure will reduce cash balances significantly. An increased level of borrowing will have to be undertaken in order to fund the Council's capital programme, whilst still maintaining sufficient cash balances to fund liabilities as they fall due.

The CIPFA Treasury Management in the Public Services: Code of Practice

The key principles of CIPFA's *Treasury Management in the Public Services: Code of Practice (2021 Edition)*, as described in Section 4 of that Code are as follows:-

Key Principle 1:

Public service organisations should put in place formal and comprehensive objectives, policies and practices, strategies and reporting arrangements for the effective management and control of their treasury management activities.

Key Principle 2:

Their policies and practices should make clear that the effective management and control of risks are prime objectives of their treasury management activities and that responsibility for these lies clearly within their organisations. Their appetite for risk should form part of their annual strategy, including any use of financial instruments for the prudent management of those risks, and should ensure that priority is given to security and portfolio liquidity when investing treasury management funds.

Key Principle 3:

They should acknowledge that the pursuit of value for money in treasury management and the use of suitable performance measures are valid and important tools for responsible organisations to employ in support of their business and service objectives; and that, within the context of effective risk management, their treasury management policies and practices should reflect this.

The Code then goes on to say that:-

“In framing these recommendations, CIPFA acknowledges the difficulties of striving for effective risk management and control, whilst at the same time pursuing value for money. This code does not seek to be prescriptive about how this issue should be handled, particularly since it covers such a wide variety of organisations. However, where appropriate, the sector specific guidance notes give suitable advice. CIPFA recognises that no two organisations in the public services are likely to tackle this issue in precisely the same manner but success in this area of treasury management is likely to be viewed, especially in value for money terms, as an indicator of a strongly performing treasury management function.”

“It is CIPFA's view that throughout the public services the priority is to protect capital rather than to maximise return. The avoidance of all risk is neither appropriate nor possible. However, a balance must be struck with a keen responsibility for public money.”

Accordingly, the Authority will adopt, as part of the standing orders, the following four clauses:-

1. The Authority will create and maintain, as the cornerstones for effective treasury management:-
 - a treasury management policy statement, stating the policies, objectives and approach to risk management of its treasury management activities; and
 - suitable treasury management practices (TMPs) setting out the manner in which the Authority will seek to achieve those policies and objectives, and prescribing how it will manage and control those activities.

The content of the Policy Statement and TMPs will follow the recommendations contained in Sections 6 and 7 of the Code, subject only to amendment where necessary to reflect the particular circumstances of the Authority. Such amendments will not result in the Authority materially deviating from the Code's key principles.

2. The County Council, Executive Committee and the Governance & Audit Committee will receive reports on the Authority's treasury management policies, practices and activities, including: an annual strategy and plan in advance of the year, a mid-year review report and an annual report after its close, in the form prescribed in the TMPs.
3. The County Council/Executive Committee are responsible for the implementation of the Authority's treasury management policies and practices in accordance with the Treasury Management Scheme of Delegation. The Section 151 Officer is responsible for the execution and administration of treasury management decisions, who will act in accordance with the Authority's policy statement and TMPs and, if he/she is a CIPFA member, CIPFA's Standard of Professional Practice on Treasury Management.
4. The Authority nominates the Governance & Audit Committee to be responsible for ensuring effective scrutiny of treasury management strategy and policies.

ECONOMIC BACKGROUND

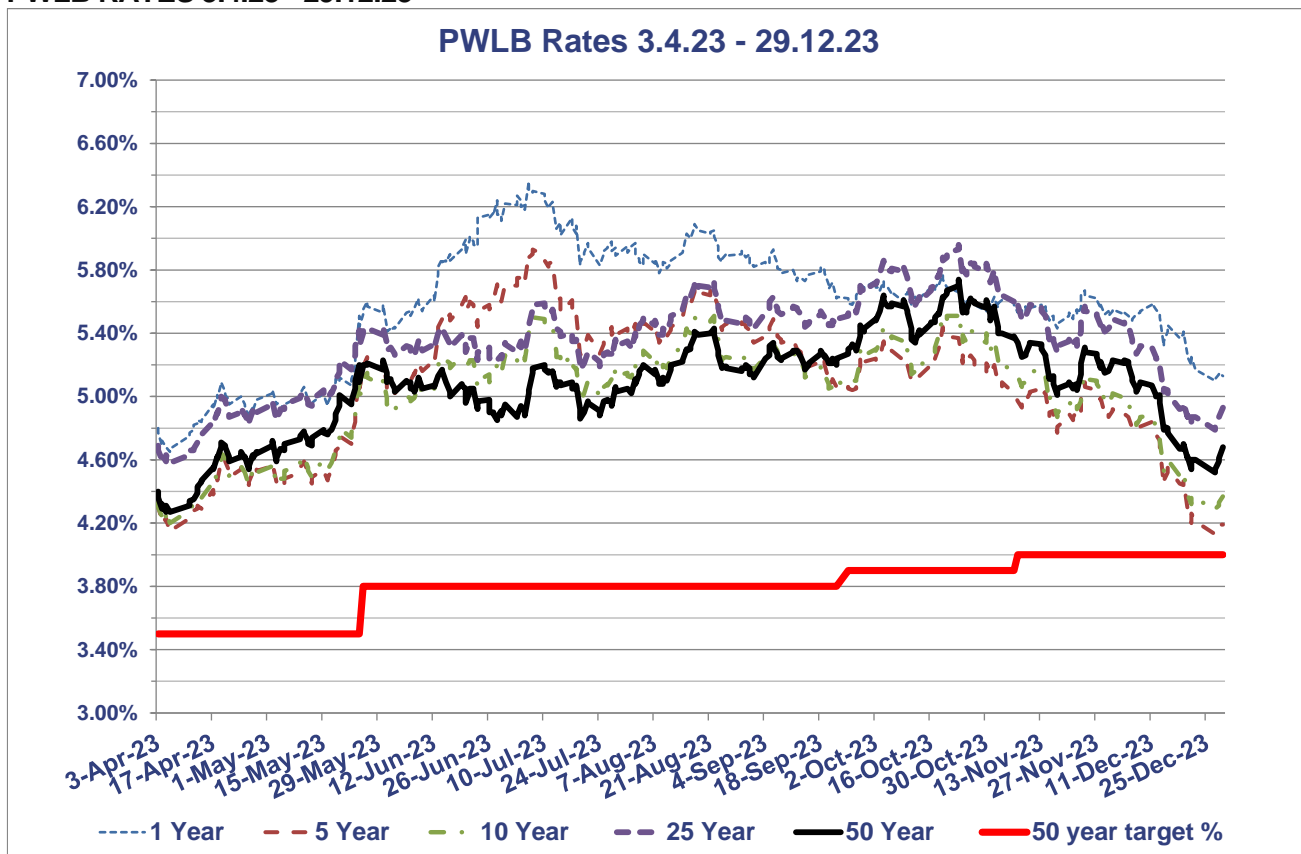
- The third quarter of 2023/24 saw:
 - A 0.3% m/m decline in real GDP in October, potentially partly due to unseasonably wet weather, but also due to the ongoing drag from higher interest rates. Growth for the second quarter, ending 30th September, was revised downwards to -0.1% and growth on an annual basis was also revised downwards, to 0.3%;
 - A sharp fall in wage growth, with the headline 3myy rate declining from 8.0% in September to 7.2% in October, although the ONS “experimental” rate of unemployment has remained low at 4.2%;
 - CPI inflation continuing on its downward trajectory, from 8.7% in April to 4.6% in October, then again to 3.9% in November;
 - Core CPI inflation decreasing from April and May’s 31 years’ high of 7.1% to 5.1% in November, the lowest rate since January 2022;
 - The Bank of England holding Bank Rate at 5.25% in November and December;
 - A steady fall in 10-year gilt yields as investors revised their interest rate expectations lower.
- The revision of GDP data in Q2 to a 0.1% q/q fall may mean the mildest of mild recessions has begun. Indeed, real GDP in October fell 0.3% m/m which does suggest that the economy may stagnate again in Q3. The weakness in October may partly be due to the unseasonably wet weather. That said, as the weakness was broad based it may also be the case that the ongoing drag from higher interest rates is more than offsetting any boost from the rise in real wages.
- However, the rise in the flash composite activity Purchasing Managers Index, from 50.7 in November to 51.7 in December, did increase the chances of the economy avoiding a contraction in Q3. The improvement was entirely driven by the increase in the services activity balance from 50.9 to 52.7. (Scores above 50 point to expansion in the economy, although only tepid in this instance.) The press release noted that this was primarily driven by a revival in consumer demand in the technological and financial services sectors. This chimes with the further improvement in the GfK measure of consumer confidence in December, from -24 to -22. The services PMI is now consistent with non-retail services output growing by 0.5% q/q in Q3, but this is in stark contrast to the manufacturing sector where the output balance slumped from 49.2 to 45.9 and, at face value, the output balance is consistent with a 1.5% q/q fall in manufacturing output in Q3.
- The 0.3% m/m fall in retail sales volumes in October means that after contracting by 1.0% q/q (which was downwardly revised from -0.8% q/q) in Q2, retail activity remained weak at the start of Q3. That suggests higher interest rates are taking a bigger toll on real consumer spending.
- Higher interest rates have filtered through the financial channels and weakened the housing market but, overall, it remains surprisingly resilient with the Halifax house price index recently pointing to a 1.7% year on year increase whilst Nationwide’s December data pointed to a -1.8% year on year decrease. However, the full weakness in real consumer spending and real business investment has yet to come as currently it is estimated that around two thirds to a half of the impact of higher interest rates on household interest payments has yet to be felt.
- Overall, we expect real GDP growth to remain subdued throughout 2024 as the drag from higher interest rates is protracted but a fading of the cost-of-living crisis and interest rate cuts in the second half of 2024 will support a recovery in GDP growth in 2025.

- The labour market remains tight by historical standards, but the sharp fall in wage growth seen in October will reinforce the growing belief in markets that interest rates will be cut mid-2024. Wage growth eased in October much faster than the consensus expected. Total earnings fell by 1.6% m/m, which meant the headline 3myy rate eased from 8.0% in September to 7.2% in October. This news will be welcomed by the Bank of England. Indeed, the timelier three-month annualised rate of average earnings growth fell from +2.4% to -1.2%. Excluding bonuses, it fell from 5.3% to 2.0%. Furthermore, one of the Bank's key barometers of inflation persistence, regular private sector pay growth, dropped from 7.9% 3myy to 7.3%, which leaves it comfortably on track to fall to 7.2% by December, as predicted by the Bank in November.
- The fall in wage growth occurred despite labour demand being stronger in October than expected. The three-month change in employment eased only a touch from +52,000 in September to +50,000 in October. But resilient labour demand was offset by a further 63,000 rise in the supply of workers in the three months to October. That meant labour supply exceeded its pre-pandemic level for the first time, and the unemployment rate remained at 4.2% in October. In the three months to November, the number of job vacancies fell for the 17th month in a row, from around 959,000 in October to around 949,000. That has reduced the vacancy to unemployment ratio as demand for labour eases relative to supply, which may support a further easing in wage growth in the coming months.
- CPI inflation fell from 6.7% in September to 4.6% in October, and then again to 3.9% in November. Both these falls were bigger than expected and there are clear signs of easing in domestic inflationary pressures. The fall in core CPI inflation from 5.7% to 5.1% in November was bigger than expected (consensus forecast 5.6%). That's the lowest rate since January 2022. Some of the decline in core inflation was due to the global influence of core goods inflation, which slowed from 4.3% to 3.3%. But some of it was due to services inflation falling from 6.6% to 6.3%. The Bank views the latter as a key barometer of the persistence of inflation and it came in further below the Bank's forecast of 6.9% in its November Monetary Policy Report. This will give the Bank more confidence that services inflation is now on a firmly downward path.
- The Bank of England sprung no surprises with its December monetary policy committee (MPC) meeting, leaving interest rates at 5.25% for the third time in a row and pushing back against the prospect of near-term interest rate cuts. The Bank continued to sound hawkish, with the MPC maintaining its tightening bias saying that "further tightening in monetary policy would be required if there were evidence of more persistent inflationary pressures". And it stuck to the familiar script, saying that policy will be "sufficiently restrictive for sufficiently long" and that "monetary policy is likely to need to be restrictive for an extended period of time". In other words, the message is that the MPC is not yet willing to endorse investors' expectations that rates will be cut as soon as May 2024.
- Looking ahead, our colleagues at Capital Economics forecast that the recent downward trends in CPI and core inflation will stall over the next few months before starting to decline more decisively again in February. That explains why we think the Bank of England won't feel comfortable cutting interest rates until H2 2024.
- The fall in UK market interest rate expectations in December has driven most of the decline in 10-year gilt yields, which have fallen in line with 10-year US Treasury and euro-zone yields. 10-year gilt yields have fallen from 4.68% in October 2023 to around 3.70% in early January, with further declines likely if the falling inflation story is maintained.
- Investors' growing expectations that the Fed will cut interest rates soon has led to an improvement in risk sentiment, which has boosted the pound and other risky assets. In addition, the rise in the pound, from \$1.21 in November to \$1.27 now, has also been supported by the recent relative decline in UK wholesale gas prices.

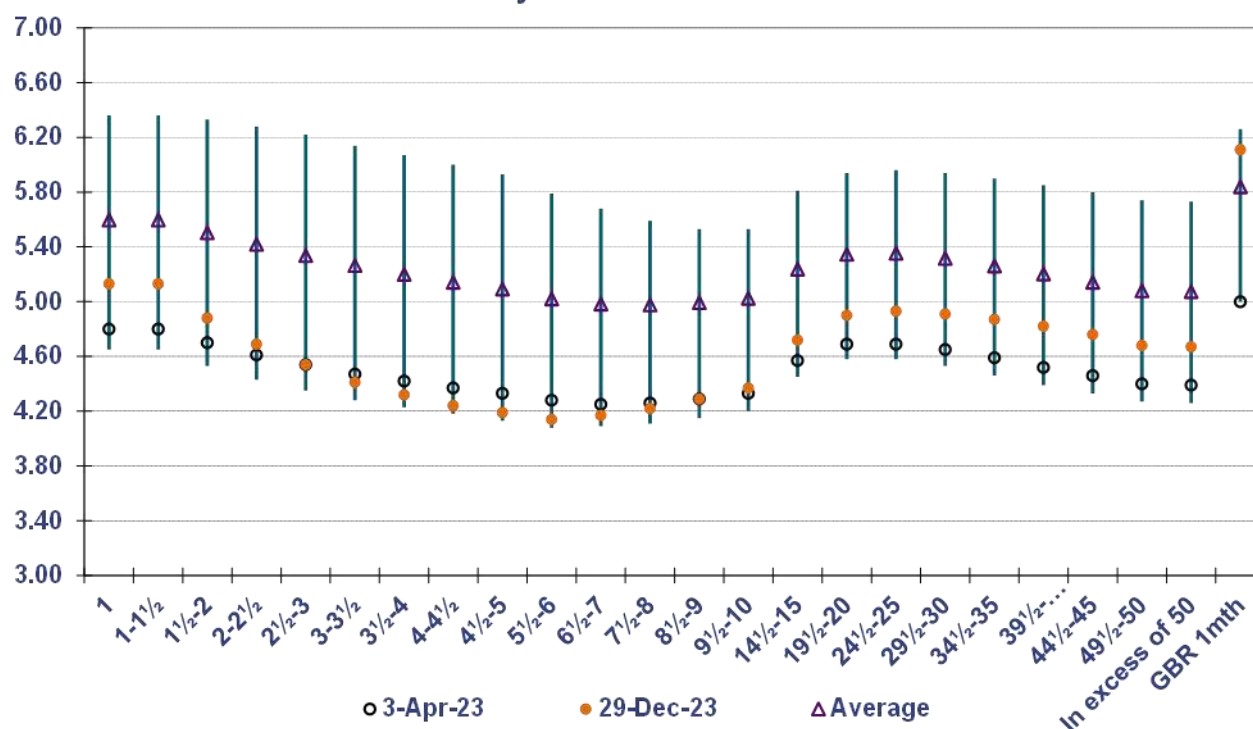
- The further fall in 10-year real gilt yields in December has supported the recent rise in the FTSE 100. That said, the index remains 5% below its record high in February 2023. This modest rise in equities appears to have been mostly driven by strong performances in the industrials and rate-sensitive technology sectors. But UK equities have continued to underperform US and euro-zone equities. The FTSE 100 has risen by 2.2% in December, while the S&P 500 has risen by 3.8%. This is partly due to lower energy prices, which have been a relatively bigger drag on the FTSE 100, due to the index's high concentration of energy companies.

In the chart below, the rise in gilt yields across the curve in the first half of 2023/24, and therein PWLB rates, is clear to see, prior to the end of year rally based on a mix of supportive domestic and international factors.

PWLB RATES 3.4.23 - 29.12.23



PWLB Certainty Rate Variations 3.4.23 to 29.12.23



HIGH/LOW/AVERAGE PWLB RATES FOR 3.4.23 – 29.12.23

	1 Year	5 Year	10 Year	25 Year	50 Year
Low	4.65%	4.13%	4.20%	4.58%	4.27%
Date	06/04/2023	27/12/2023	06/04/2023	06/04/2023	05/04/2023
High	6.36%	5.93%	5.53%	5.96%	5.74%
Date	06/07/2023	07/07/2023	23/10/2023	23/10/2023	23/10/2023
Average	5.60%	5.09%	5.03%	5.35%	5.08%
Spread	1.71%	1.80%	1.33%	1.38%	1.47%

MPC meetings 2nd November and 14th December 2023

- On 2nd November, the Bank of England’s Monetary Policy Committee (MPC) voted to keep Bank Rate on hold at 5.25%, and on 14th December reiterated that view. Both increases reflected a split vote, the latter by 6 votes to 3, with the minority grouping voting for an increase of 0.25% as concerns about “sticky” inflation remained in place.
- Nonetheless, with UK CPI inflation now at 3.9%, and core inflating beginning to moderate (5.1%), markets are voicing a view that rate cuts should begin in Q1 2024/25, some way ahead of the indications from MPC members. Of course, the data will be the ultimate determinant, so upcoming publications of employment, wages and inflation numbers will be of particular importance, and on-going volatility in Bank Rate expectations and the gilt yield curve can be expected.
- In addition, what happens outside of the UK is also critical to movement in gilt yields. The US FOMC has kept short-term rates in the range of 5.25%-5.50%, whilst the ECB has moved its Deposit rate to a probable peak of 4%. Markets currently expect both central banks to start cutting rates in 2024.



PWLB debt	Current borrowing rate as at 08.01.24 p.m.	Target borrowing rate now (end of Q4 2025)	Target borrowing rate previous (end of Q3 2025)
5 years	4.53%	3.70%	3.80%
10 years	4.67%	3.90%	3.80%
25 years	5.19%	4.20%	4.20%
50 years	4.97%	4.00%	4.00%



Rhan o gyngor dderbyniwyd gan / An extract from advice received from: Link Group, Treasury Solutions

Rhagolygon Graddfeydd Llog 2024/2025

Interest Rate Forecasts 2024/2025

PWLB rates and forecast shown below have taken into account the 20 basis point certainty rates.

Interest Rate Forecasts								
Bank Rate	Mar-24	Jun-24	Sep-24	Dec-24	Mar-25	Jun-25	Sep-25	Dec-25
Link	5.25%	5.25%	4.75%	4.25%	3.75%	3.25%	3.00%	3.00%
Cap Econ	5.25%	5.00%	4.50%	4.00%	3.50%	3.00%	3.00%	3.00%
5Y PWLB RATE								
Link	4.50%	4.40%	4.30%	4.20%	4.10%	4.00%	3.80%	3.70%
Cap Econ	4.50%	4.30%	4.20%	4.00%	3.90%	3.80%	3.80%	3.70%
10Y PWLB RATE								
Link	4.70%	4.50%	4.40%	4.30%	4.20%	4.10%	4.00%	3.90%
Cap Econ	4.50%	4.40%	4.20%	4.10%	4.10%	4.10%	4.10%	4.10%
25Y PWLB RATE								
Link	5.20%	5.10%	4.90%	4.80%	4.60%	4.40%	4.30%	4.20%
Cap Econ	5.10%	4.80%	4.60%	4.30%	4.40%	4.40%	4.50%	4.60%
50Y PWLB RATE								
Link	5.00%	4.90%	4.70%	4.60%	4.40%	4.20%	4.10%	4.00%
Cap Econ	4.70%	4.60%	4.50%	4.30%	4.30%	4.30%	4.40%	4.40%

Additional notes by Link on this forecast table: -

- Our central forecast for interest rates was previously updated on 7 November and reflected a view that the MPC would be keen to further demonstrate its anti-inflation credentials by keeping Bank Rate at 5.25% until at least H2 2024. We expect rate cuts to start when both the CPI inflation and wage/employment data are supportive of such a move, and when there is a likelihood of the overall economy enduring at least a slowdown or mild recession over the coming months (although most recent GDP releases have surprised with their on-going robustness).
- Naturally, timing on this matter will remain one of fine judgment: cut too soon, and inflationary pressures may well build up further; cut too late and any downturn or recession may be prolonged.
- In the upcoming months, our forecasts will be guided not only by economic data releases and clarifications from the MPC over its monetary policies and the Government over its fiscal policies, but also international factors such as policy development in the US and Europe, the provision of fresh support packages to support the faltering recovery in China as well as the on-going conflict between Russia and Ukraine, and Gaza and Israel.

Rhan o gyngor dderbyniwyd gan / An extract from advice received from: Link Group

DADANSODDIAD BENTHYCIADAU PWLB YN AEDDFEDU 2024/25 YMLAEN / PWLB LOANS MATURITY ANALYSIS 2024/25 ONWARDS						
	Aeddfedu PWLB Maturity	Blwydd-dal PWLB EIP/ Annuity	Benthyciadau Marchnad/ Market Loans	Amrywiol/ PWLB Variable	Cyfanswm yn Aeddfedu/ Total Maturing	%Yn Aeddfedu o'r Cyfran yn sefyll/ Maturing of Total Outstanding %
	£'000	£'000	£'000	£'000	£'000	
2024/25	0	18	0	0	18	0.0
2025/26	0	20	0	0	20	0.0
2026/27	1,381	22	0	0	1,403	1.2
2027/28	2,165	24	0	0	2,189	1.9
2028/29	262	26	0	0	288	0.2
2029/30	1,539	21	0	0	1,560	1.3
2030/31	451	15	0	0	466	0.4
2031/32	1,941	9	0	0	1,950	1.7
2032/33	315	7	0	0	322	0.3
2033/34	637	0	0	0	637	0.6
2034/35	624	0	0	0	624	0.5
2035/36	611	0	0	0	611	0.5
2036/37	599	0	0	0	599	0.5
2037/38	587	0	0	0	587	0.5
2038/39	226	0	0	0	226	0.2
2039/40	5,000	0	0	0	5,000	4.2
2040/41	3,500	0	0	0	3,500	3.0
2042/43	1,000	0	0	0	1,000	0.8
2043/44	1,020	0	0	0	1,020	0.9
2044/45	1,010	0	0	0	1,010	0.9
2045/46	11,464	0	0	0	11,464	9.7
2050/51	2,000	0	0	0	2,000	1.7
2052/53	28,238	0	0	0	28,238	24.0
2054/55	3,000	0	0	0	3,000	2.6
2055/56	3,500	0	0	0	3,500	3.0
2056/57	5,000	0	0	0	5,000	4.2
2057/58	8,513	0	0	0	8,513	7.2
2059/60	1,763	0	0	0	1,763	1.5
2064/65	10,000	0	0	0	10,000	8.5
2066/67	6,200	0	0	0	6,200	5.3
2068/69	15,000	0	0	0	15,000	12.7
	117,546	162	0	0	117,708	100.0
Cyfartaledd bywyd (blynyddoedd)/ Average life (years)	31.14	3.42	0.00	0.00	31.10	
Cyfartaledd graddf (%)/ Average rate (%)	4.47	9.42	0.00	0.00	4.47	

**PROFFIL AD-DALU BENTHYCIADAU ERAILL 2024/25 YMLAEN /
OTHER LOANS REPAYMENT PROFILE 2024/25 ONWARDS**

	Benthyciad Salix Loan 1	Benthyciad Salix Loan 2	Benthyciad Salix Loan 3	Benthyciad Salix Loan	Benthyciad Salix Loan 5	Benthyciad Salix Loan 6	Cyfanswm / Total
	£'000	£'000	£'000	£'000	£'000	£'000	£'000
2024/25	8	46	64	26	220	264	628
2025/26	0	45	64	26	220	264	619
2026/27	0	0	64	27	220	264	575
2027/28	0	0	63	27	220	264	574
2028/29	0	0	63	27	220	264	574
2029/30	0	0	0	13	221	265	499
2030/31	0	0	0	0	221	265	486
2031/32	0	0	0	0	221	265	486
2032/33						265	265
2033/24						265	265
2034/35						265	265
2035/36						265	265
Cyfanswm / Total	8	91	318	146	1,763	3,175	5,501

Minimum Revenue Provision (MRP) Policy Statement 2024/25

The Council is required to pay off an element of the accumulated Council Fund and HRA capital spend funding by borrowing, each year (the CFR) through a revenue charge (the minimum revenue provision, MRP), although it is also allowed to undertake additional voluntary payments if required (voluntary revenue provision, VRP).

The Welsh Government statutory guidance requires the Council to approve a MRP Statement in advance of each year. The guidance also states “if it is ever proposed to vary the terms of the original statement during the year, a revised statement should be put to the Council at that time”. A variety of options is provided to councils, so long as there is a prudent provision. The Council is recommended to approve the following MRP Statement, which remains unchanged from the MRP Policy 2023/24:

From 1st April 2022, for all capital expenditure funded by supported and unsupported borrowing (CFR), MRP will be charged on the asset life - annuity method at the Council's average interest rate on all of its loans at the end of each relevant year-end.

MRP charges based on the asset life – annuity method may not be charged until the year the asset becomes operational. The Section 151 Officer may postpone the MRP charge until the financial year following the one in which the asset becomes operational. The estimated asset life of the asset would be determined in the year the MRP commences and would not change over the life of the asset. The estimated life periods will be set by the Section 151 Officer, based upon advice received from the relevant officers and will have regard to statutory requirements and Welsh Government guidance in relation to MRP and asset life. Where land is purchased, the asset life will be based on the asset life of the asset placed on the land, which in the majority of cases will be 50 years, in line with the asset life for buildings.

As some types of capital expenditure incurred by the Council are not capable of being related to an individual asset, asset lives will be assessed on a basis which most reasonably reflects the anticipated period of benefit that arises from the expenditure. In addition, whatever type of expenditure is involved, it will be grouped together in a manner which reflects the nature of the main component of expenditure and will only be divided up in cases where there are two or more major components with substantially different useful economic lives.

The Council retains the right to make additional voluntary payments to reduce debt if deemed prudent.

The Housing Revenue Account (HRA) MRP charge for its share of supported and unsupported borrowing, will also be based on the asset life – annuity method at the Council's average interest rate on its loans at the relevant year end.

Any repayments included in annual PFI or finance leases are applied as MRP and will be consistent with the asset life – annuity basis over the life of the lease or PFI scheme.

Specified and Non-Specified Investments

The Welsh Government 'Guidance on Local Government Investments' (Effective from 1 April 2010) provides the definition of specified and non-specified investments.

Paragraph 5.1 of the 'Guidance' states that an investment is specified if all of the following apply:-

- (a)** the investment is denominated in sterling and any payments or repayments in respect of the investment are payable only in sterling; and
- (b)** the investment is not a long-term investment (*); and
- (c)** the making of the investment is not defined as capital expenditure by virtue of regulation 20(1)(d) of the Local Authorities (Capital Finance and Accounting) (Wales) Regulations 2003 [SI 3239 as amended]; and
- (ch)** the investment is made with a body or in an investment scheme of high credit quality (**); or with one of the following public-sector bodies:
 - (i)** the United Kingdom Government;
 - (ii)** a local authority in England or Wales (as defined in section 23 of the 2003 Act) or a similar body in Scotland or Northern Ireland;
 - (iii)** a parish or community council.

The 'Guidance' also states that any investment not meeting the definition of paragraph 5.1 is classified as a non-specified investment.

During 2024/25 the Council does not intend to make any investments in foreign currencies, nor any with low credit quality bodies, nor any that are defined as capital expenditure by legislation (such as company shares). Non-specified investments will therefore be limited to (i) long-term investments; and (ii) deposits with the Council's own banker for transactional purposes if it fails to meet the basic credit criteria; in this instance balances will be minimised as far as is possible

The table in Appendix 7 set out the investment criteria and limits for the categories of investments intended for use during 2024/25 and, therefore, form the basis for the approved lending list.

Any proposed revisions or amendments during the year to the categories of specified and non-specified investments to be used and / or to the associated credit rating criteria / investment limits will be subject to prior approval by the County Council.

Counterparty Criteria

Category	Short Term Credit Rating (Fitch)	Short Term Credit Rating (Moody's)	Short Term Credit Rating (Standard & Poor's)	Long Term Credit Rating (Fitch)	Long Term Credit Rating (Moody's)	Long Term Credit Rating (Standard & Poor's)	Cash Limit	Time Limit
Bank and Building Societies (not nationalised or part nationalised)	F1+	P-1	A-1+	AAA	Aaa	AAA	£10m	5 years
	F1+	P-1	A-1+	AA	Aa2	AA	£10m	3 years
	F1+	P-1	A-1+	AA-	Aa3	AA-	£10m	364 days
	F1	P-1	A-1	A	A2	A	£7.5m	6 months
Nationalised / Part Nationalised UK Banks	n/a	n/a	n/a	n/a	n/a	n/a	£10m	364 days
NatWest Bank (Part Nationalised)	n/a	n/a	n/a	n/a	n/a	n/a	£30m	364 days
UK Central Government (irrespective of credit rating)	n/a	n/a	n/a	n/a	n/a	n/a	No maximum	No maximum
UK Local Authorities*	n/a	n/a	n/a	n/a	n/a	n/a	£10m	364 days
Money Market Funds	n/a	n/a	n/a	AAA	AAA	AAA	£5m	6 months

*as defined in the Local Government Act 2003

Notes and Clarifications

(1) Cash Limit

- (i) The cash limits apply both to the individual counterparty and to the overall group to which it belongs (e.g. for the banks within the Lloyds Banking Group plc (being Bank of Scotland plc and Lloyds Bank plc), the investment limit applies to those banks individually and the banking group as a whole);
- (ii) The overall cash limit for deposits over 364 days is £15m.

(2) Time Limit

- (i) This up to and including the period indicated.

(3) Foreign Countries

- (i) Investments in foreign countries will be limited to those that hold a sovereign credit rating of (Fitch) AA- or equivalent (from the agencies referred to in section 4.3 of this strategy) sovereign credit rating (based upon the lowest common denominator), and to a maximum of £10 million per foreign country.
- (ii) Investments in countries whose lowest sovereign rating is not AA or above will not be permitted. No country limit will apply to investments in the UK, irrespective of the sovereign credit rating.
- (iii) Subsidiaries of foreign banking groups will normally be assessed according to the country of domicile of the parent organisation. However, Santander UK plc (a subsidiary of Spain's Banco Santander) will be classed as a UK bank due to its substantial UK franchises and the arms-length nature of the parent-subsidary relationships.

(4) Credit Rating Downgrade

Should a credit rating downgrade place a counterparty below the minimum credit rating criteria for investment, the counterparty will cease to be used as soon as practicable.

If the Section 151 Officer wishes to continue investing with that counterparty approval will be sought from the Chair of the Governance & Audit Committee plus one other member of the Chair's choosing, who both must approve the action. This will then be reported as appropriate at the next available opportunity.

Approved countries for investments [correct as at 19 December 2022]

This list is based on those countries which have sovereign ratings of AA- or higher (we show the lowest rating from Fitch, Moody's and S&P) and also, (except - at the time of writing - for Hong Kong, and Luxembourg), have banks operating in sterling markets which have credit ratings of green or above in the Link credit worthiness service.

Based on lowest available rating

AAA

- Australia
- Denmark
- Germany
- Netherlands
- Norway
- Singapore
- Sweden
- Switzerland

AA+

- Canada
- Finland
- U.S.A.

AA

- Abu Dhabi (UAE)

AA-

- Belgium
- Qatar
- France (downgraded by Fitch 2023)
- **U.K.**

Treasury management scheme of delegation

(i) County Council

- budget approval;
- approval of the annual Treasury Management Strategy Statement, Annual Investment Strategy and MRP Policy, annual Treasury Management Policy Statement and amendments thereto;
- approval of amendments to the Council's adopted clauses;
- receiving and reviewing monitoring reports on treasury management policies, practices and activities; and
- acting on recommendations received from the Governance & Audit Committee and/or Executive Committee.

(ii) Executive Committee

- budget consideration;
- approval of the division of responsibilities;
- approval of the selection of external service providers and agreeing terms of appointment;
- receiving and reviewing monitoring reports on treasury management policies, practices and activities and making recommendations to the County Council as appropriate; and
- acting on recommendations received from the Governance & Audit Committee.

(iii) Governance & Audit Committee

- Scrutiny of Treasury Management matters as required by CIPFA's Code of Practice on Treasury Management and the Council's Treasury Management Policy. This includes:-
 - scrutinising the annual Treasury Management Strategy Statement, Annual Investment Strategy, Annual MRP Policy, Annual Treasury Management Policy and Treasury Management Practices and making recommendations to the Executive Committee and County Council as appropriate;
 - scrutinising proposals for amendments to the annual Treasury Management Strategy Statement, Annual Investment Strategy, Annual MRP Policy, Annual Treasury Management Policy and Treasury Management Practices and to the adopted clauses and making recommendations to the Executive and County Council as appropriate;
 - receiving and scrutinising any other proposals relating to the treasury management which require a decision by the Executive or County Council; and
 - receiving and scrutinising monitoring reports on treasury management policies, practices and activities and make recommendations to the Executive and County Council as appropriate.

The Treasury Management role of the Section 151 Officer

The Section 151 (responsible) Officer's role includes:-

- recommending clauses, treasury management policy/practices for approval, reviewing the same regularly, and monitoring compliance;
- submitting regular treasury management policy reports;
- submitting budgets and budget variations;
- receiving and reviewing management information reports;
- reviewing the performance of the treasury management function;
- ensuring the adequacy of treasury management resources and skills, and the effective division of responsibilities within the treasury management function;

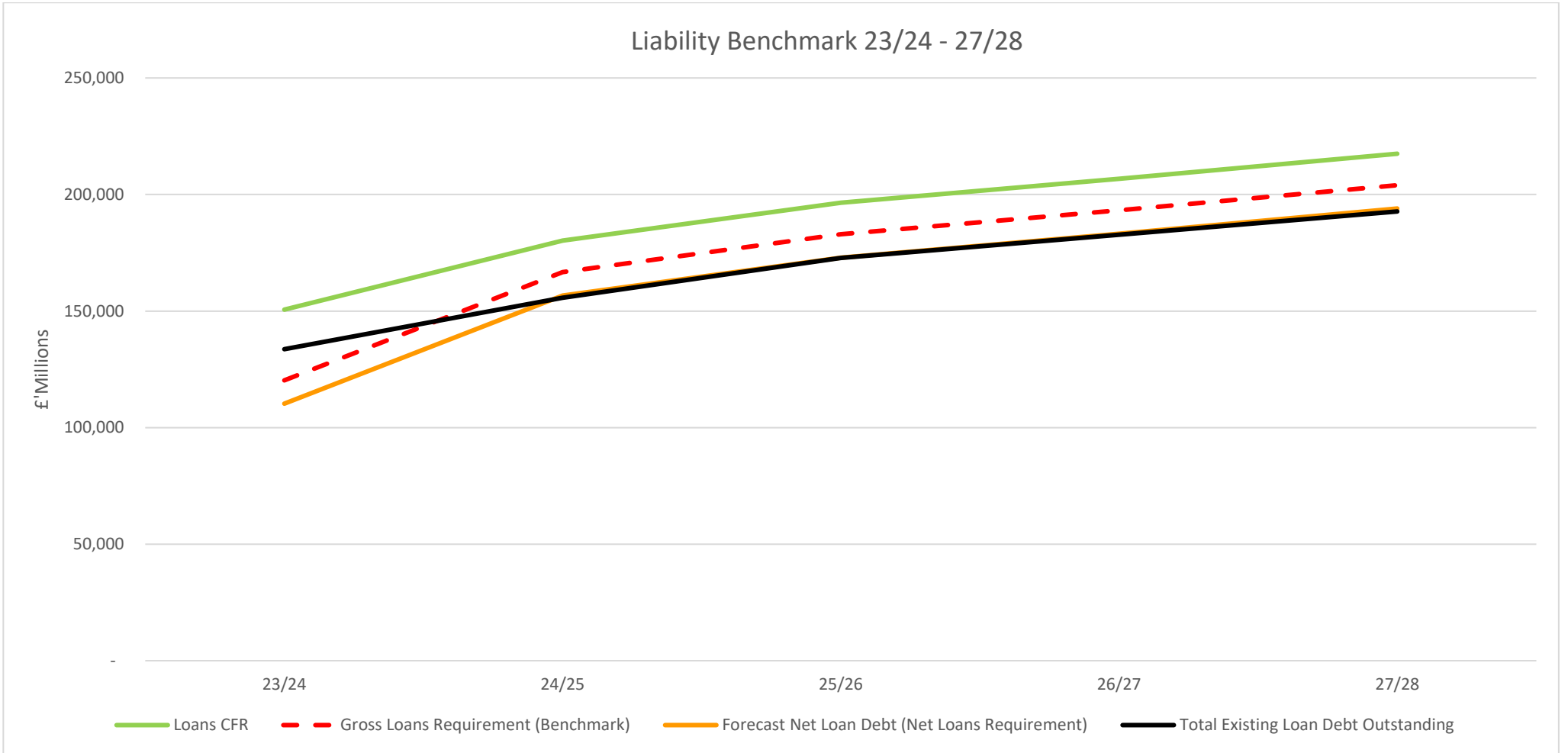
- ensuring the adequacy of internal audit, and liaising with external audit;
- recommending the appointment of external service providers;
- responsibility for the execution and administration of its Treasury decisions, including decision on borrowing, investment and financing, have been delegated to the Section 151 Officer, who will act in accordance with the Council's policy statements and TMP's;
- preparation of a capital strategy to include capital expenditure, capital financing, non-financial investments and treasury management, with a long term timeframe;
- ensuring that the capital strategy is prudent, sustainable, affordable and prudent in the long term and provides value for money;
- ensuring that due diligence has been carried out on all treasury and non-financial investments and is in accordance with the risk appetite of the Authority;
- ensure that the Authority has appropriate legal powers to undertake expenditure on non-financial assets and their financing;
- ensuring the proportionality of all investments so that the Authority does not undertake a level of investing which exposes the Authority to an excessive level of risk compared to its financial resources;
- ensuring that an adequate governance process is in place for the approval, monitoring and ongoing risk management of all non-financial investments and long term liabilities;
- provision to Members of a schedule of all non-treasury investments including material investments in subsidiaries, joint ventures, loans and financial guarantees;
- ensuring that Members are adequately informed and understand the risk exposures taken on by the Authority;
- ensuring that the Authority has adequate expertise, either in house or externally provided, to carry out the above;
- creation of Treasury Management Practices which specifically deal with how non treasury investments will be carried out and managed, to include the following: -
 - Risk management (TMP1 and schedules), including investment and risk management criteria for any material non-treasury investment portfolios;
 - Performance measurement and management (TMP2 and schedules), including methodology and criteria for assessing the performance and success of non-treasury investments;
 - Decision making, governance and organisation (TMP5 and schedules), including a statement of the governance requirements for decision making in relation to non-treasury investments; and arrangements to ensure that appropriate professional due diligence is carried out to support decision making;
 - Reporting and management information (TMP6 and schedules), including where and how often monitoring reports are taken;
 - Training and qualifications (TMP10 and schedules), including how the relevant knowledge and skills in relation to non-treasury investments will be arranged.

**PRUDENTIAL & TREASURY INDICATORS
BUDGET SETTING 2024/25**

APPENDIX 10

No.	Indicator	2022/23 actual	2023/24 estimate	2024/25 proposal	2025/26 proposal	2026/27 proposal
Affordability						
1,2	Estimates of [or actual] ratio of financing costs to net revenue stream:					
	Council Fund	3.11%	2.31%	3.12%	3.20%	3.15%
	Housing Revenue Account (inclusive of settlement)	7.26%	6.10%	10.38%	13.19%	14.72%
	Total	3.57%	2.73%	3.89%	4.24%	4.35%
Prudence						
3	Gross debt and the Capital Financing Requirement (CFR)	✓	✓	✓	✓	✓
	<i>Is the gross external debt < the CFR for the preceding year plus the estimates of any additional CFR for the current and the next two financial years?</i>			✓	✓	✓
Capital Expenditure		£'000	£'000	£'000	£'000	£'000
4,5	Estimates of [or actual] capital expenditure					
	Council Fund	29,510	32,330	15,565	5,028	4,836
	Housing Revenue Account	11,180	18,192	35,145	29,974	26,291
	Total	40,690	50,522	50,710	35,002	31,127
6,7	Estimates of [or actual] Capital Financing Requirement					
	Council Fund	105,825	112,483	116,485	117,598	118,670
	Housing Revenue Account	38,287	38,105	55,506	70,640	79,851
	Total	144,112	150,588	171,991	188,238	198,521
External Debt		£'000	£'000	£'000	£'000	£'000
8	Authorised Limit					
	: General Borrowing	175,000	175,000	205,664	215,696	225,642
	: Other long term liabilities	5,000	5,000	10,000	10,000	10,000
	: Total	180,000	180,000	215,664	225,696	235,642

9	Operational Boundary					
	: General Borrowing	170,000	170,000	200,664	210,696	220,642
	: Other long term liabilities	5,000	5,000	10,000	10,000	10,000
	: Total	175,000	175,000	210,664	220,696	230,642
10	Actual External Debt	125,348				
Treasury Management		2022/23 actual	2023/24 estimate	2024/25 proposal	2025/26 proposal	2026/27 proposal
11	The limit for total principal sums invested for periods longer than 364 days <i>(any long term investments carried forward from previous years will be included in each year's limit)</i>	15,000	15,000	15,000	15,000	15,000
			2024/25 upper limit		2024/25 lower limit	
12	The upper and lower limits for the maturity structure of fixed rate borrowing					
	• under 12 months			20%		0%
	• 12 months and within 24 months			20%		0%
	• 24 months and within 5 years			50%		0%
	• 5 years and within 10 years			75%		0%
	• 10 years and above			100%		0%
				no change		no change
13	Liability Benchmark (see chart below)					



Information on Prudential & Treasury Management indicators

PRUDENTIAL INDICATORS

A) Affordability

1 & 2 Ratio of financing costs to net revenue stream

This indicator identifies the trend in the cost of capital (borrowing and other long term obligation costs net of investment income) against the net revenue stream.

The estimates of financing costs include current commitments and the proposals in this budget report.

B) Prudence

3 Gross Debt and the CFR

The Council needs to ensure that its gross debt does not, except in the short term, exceed the total of the CFR in the preceding year plus the estimates of any additional CFR for 2024/25 and the following two financial years. This allows some flexibility for limited early borrowing for future years, but ensures that borrowing is not undertaken for revenue purposes.

C) Capital expenditure

The Council's capital expenditure plans are the key driver of treasury management activity. The output of the capital expenditure plans is reflected in the prudential indicators, which are designed to assist members' overview and confirm capital expenditure plans.

This provides a summary of the Council's capital expenditure. It reflects matters previously agreed and those proposed for the forthcoming financial periods.

The extent to which such expenditure is to be financed will influence how the Council's Capital Financing Requirement Indicator will change.

4 & 5 Estimates of Capital Expenditure

This is the forecast Capital Expenditure from 2022/23 to 2025/26, and is based on the Capital Programme for 2022/23 and the Capital Strategy for 2024/25.

6 & 7 The Council's borrowing need (the Capital Financing Requirement)

Another prudential indicator is the Council's Capital Financing Requirement (CFR). The CFR is simply the total historic outstanding capital expenditure which has not yet been paid for from either revenue or capital resources. It is essentially a measure of the Council's underlying borrowing need. Any capital expenditure above, which has not immediately been paid for through a revenue or capital resource, will increase the CFR.

The CFR does not increase indefinitely, as the minimum revenue provision (MRP) is a statutory annual revenue charge which broadly reduces the borrowing need in line with each assets life, and so charges the economic consumption of capital assets as they are used.

The CFR includes any other long term liabilities (e.g. PFI schemes, finance leases). Whilst these increase the CFR, and therefore the Council's borrowing requirement, these types of scheme include a borrowing facility and so the Council is not required to separately borrow for these schemes. The Council currently has £nil of such schemes within the CFR.

CH) External Debt

- 8. The authorised limit for external debt.** A further key prudential indicator represents a control on the maximum level of borrowing. This represents a limit beyond which external debt is prohibited, and this limit needs to be set or revised by the full Council. It reflects the level of external debt which, while not desired, could be afforded in the short term, but is not sustainable in the longer term. This is the statutory limit determined under section 3 (1) of the Local Government Act 2003. The Government retains an option to control either the total of all councils' plans, or those of a specific council, although this power has not yet been exercised.

The Section 151 Officer reports that the Council complied with this prudential indicator in the current year and does not envisage difficulties for the future. This view takes into account current commitments, existing plans, and the proposals in the budget report.

- 9. The operational boundary.** This is the limit beyond which external debt is not normally expected to exceed. In most cases, this would be a similar figure to the CFR, but may be lower or higher depending on the levels of actual debt and the ability to fund under-borrowing by other cash resources.
- 10. Actual external debt.** The Council has to disclose the closing balance for actual gross borrowing in respect of the financial period just ended, together with the level of other long-term liabilities and so the actual aggregate level of external debt at the Balance Sheet date.

TREASURY INDICATORS

- 11. Limits for Long Term Treasury Management Investments.** This Indicator is seeking to support control of liquidity risk. The limits should be set with regard to the Council's liquidity needs and also reduce the potential need to have to make early exit from an investment in order to recover funds. The indicator relates solely to the Council's investments for treasury management purposes.
- 12. Maturity Structure of Borrowing.** The Council is required to set gross limits on maturities for the periods shown and covers both fixed and variable rate borrowings. The reason being to try and control the Council's exposure to large sums falling due for refinancing.
- 13. Liability Benchmark.** The new prudential indicator for 2024/25 is the Liability Benchmark (LB). The Council is required to estimate and measure the LB for the forthcoming financial year and the following two financial years.

There are four components to the LB: -

- 1. Existing loan debt outstanding:** the Council's existing loans that are still outstanding in future years.
- 2. Loans CFR:** this is calculated in accordance with the loans CFR definition in the Prudential Code and projected into the future based on approved prudential borrowing and planned MRP.

3. **Net loans requirement:** this will show the Council's gross loan debt less treasury management investments at the last financial year-end, projected into the future and based on its approved prudential borrowing, planned MRP and any other major cash flows forecast.
4. **Liability benchmark** (or gross loans requirement): this equals net loans requirement plus short-term liquidity allowance.

Glossary

CAPITAL EXPENDITURE

Capital expenditure is expenditure on the purchase of a non-current asset, which will be used in providing services beyond the current financial year, or expenditure which adds to, and not merely maintains, the value of an existing non-current asset. Examples include: the building of a new school, the purchase of IT equipment, a major refurbishment of a care home.

CAPITAL FINANCING

Funds that are available to pay for capital expenditure. There are various methods of financing capital expenditure including borrowing, leasing, direct revenue financing, usable capital receipts, capital grants, capital contributions, revenue reserves and earmarked reserves.

CAPITAL FINANCING REQUIREMENT

The total historic outstanding capital expenditure which has not yet been paid for from either revenue or capital resources. It is essentially a measure of the Council's underlying borrowing need.

CAPITAL PROGRAMME

The capital schemes the Council intends to carry out over a specific period of time.

CAPITAL RECEIPTS

Capital receipts represent the proceeds from the disposal of land or other non-current assets. Proportions of capital receipts can be used to finance new capital expenditure, within rules set down by the government, but they cannot be used to finance revenue expenditure.

CIPFA

This is The Chartered Institute of Public Finance and Accountancy, the lead professional and regulatory body for local Authority accounting.

HOUSING REVENUE ACCOUNT (HRA)

The HRA is a separate account to the Council Fund, and includes the income and expenditure arising from the provision of housing accommodation by the Council.

INTEREST RECEIVABLE OR PAYABLE

The effective interest rate method is used to measure the carrying value of a financial asset or liability measured at cost less accumulated amortisation, and to allocate associated interest income or expense to the relevant period. The effective interest rate is the rate that exactly discounts estimated future cash payments or receipts through the expected life of the financial instrument to equal the amount at initial recognition. The effective interest is adjusted to the actual interest payment or receipt through the Movement in Reserves Statement to ensure only actual interest is charged to Council Tax. For financial assets and liabilities carried at cost because the effective rate of interest is the same as the carrying rate of interest, the carrying value is adjusted for accrued interest.

MINIMUM REVENUE PROVISION (MRP)

The minimum amount which must be charged to the revenue account each year in order to provide for the repayment of loans and other amounts borrowed by the Council.

NET DEBT

The Net Debt is the Council's borrowings less cash and liquid resources.

PUBLIC WORKS LOANS BOARD (PWLB)

A Central Government Agency which provides loans for one year and/or more to authorities at interest rates only slightly higher than those at which the government can borrow itself.

REVENUE EXPENDITURE FUNDED BY CAPITAL UNDER STATUTE (REFCUS)

Expenditure which can be properly deferred (i.e. treated as capital in nature), but which does not result in, or remain matched with, a tangible asset. Examples of deferred charges are grants of a capital nature to voluntary organisations.

REVENUE SUPPORT GRANT

A grant paid by Central Government to authorities, contributing towards the general cost of their services.

SUPPORTED BORROWING

The Council borrows money to fund part of its capital programme. This borrowing is recognised by Central Government in its calculation of formula funding for the Council.

TEMPORARY BORROWING

Money borrowed for a period of less than one year.

UNSUPPORTED BORROWING

The Council can borrow additional money to the borrowing supported by Government to finance its capital expenditure as long as it is affordable and sustainable. This power is governed by the Chartered Institute of Public Finance and Accountancy's (CIPFA) Prudential Code, with which the Council fully complies.